

# 41262

# Express Coating Buffer (1x) For ELISA (pH 6.4)

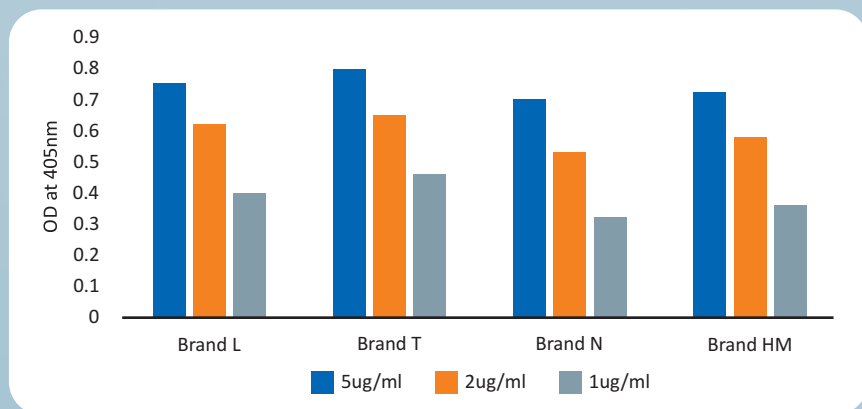
Coating buffers are generally used for adsorptive immobilization of proteins and antibodies on plastic surfaces like microtiter or ELISA plates or protein-binding plastic/glass surfaces. They play a major role in defining the efficiency of an assay or diagnostic test.

Majority of commercial buffers used are Phosphate Buffer Saline (PBS) and Carbonate Buffer, which requires 1 hour to overnight incubation to coat protein or antibodies. This increases turnaround-time of the experiment and delays the results.

With SRL's Express Coating Buffer we reduce the Incubation time and offer Instant Coating within 10 minutes at 37°C, thereby drastically reducing the turnaround time to 2-3 hours, especially in ELISA Experiments.



Product Feature	SRL's Express Coating Buffer	Other brands
Composition	Special formulation	Phosphate Buffer Saline (PBS) or Carbonate Buffer
Incubation time to coat proteins and antibodies on Microtiter plate	Instant coating, within 10 minutes at 37°C	1 hour to overnight
Turnaround time (For Elisa experiment)	Within 2 – 3 hours	One to two days
Coatability on Plastic plates or Microtiter plates	Demonstrated superior coatability on low cost Microtiter plates (Brand L, HM & T) compared to expensive ones (Brand N)	May or may not coat on inexpensive plates



Graphical Representation of SRL's Express Coating Buffer Coatability efficiency on both low cost Microtiter plates (Brand L, Brand HM and Brand T) compared to expensive ones (Brand N)



Please contact:



**SRL**<sup>®</sup>  
**SISCO RESEARCH LABORATORIES PVT. LTD.**

[www.srlchem.com](http://www.srlchem.com)